

# THE NEW YORKER

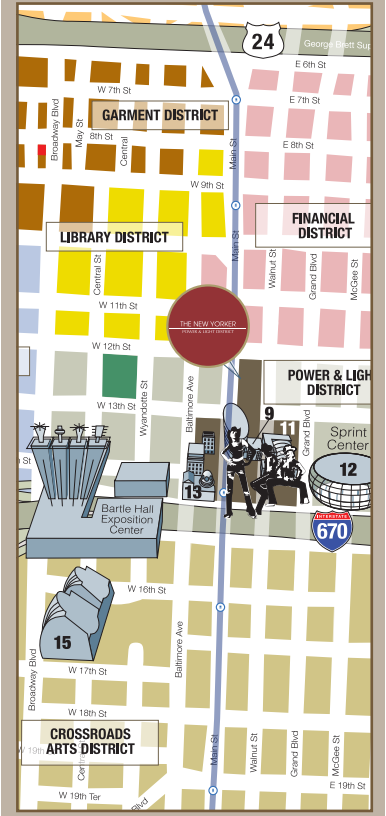
## POWER & LIGHT DISTRICT

The New Yorker was originally constructed in 1915 as the Hotel Bray and is listed on the National Register of Historic Places. Nicknamed 'Kansas City's Skinniest Skyscraper', this historic apartment building is located at 1114 Baltimore just steps away from the Streetcar and Power and Light District in Downtown Kansas City. Designed in the Jacobethan Architectural Style, the brick east façade is decorated with terra cotta window surrounds, string courses, crenellations and a double roof gable. Historic terrazzo flooring can be found throughout the building including a beautifully restored floral mosaic on the first floor.

Today within this distinctively lean structure eight floors have been modernized into 29 studio and one bedroom apartments with open layouts and modern finishes ranging in size from 385 to 745 square feet. Apartment features include polished concrete floors with terrazzo accents, stone counter tops, stylish kitchens with stainless steel appliances, sleek bathrooms, Nest thermostats and Google Fiber. As a resident you will enjoy free amenities such as a mid-century inspired lounge, fitness club, laundry center, and resident storage. Adjacent to the lobby you will find a cozy coffee bar and tap room serving the best locally made products.

Nightlife spots, desired restaurants and trendy destinations are in close proximity to the New Yorker. During warmer months, Kansas City residents flock to the Crossroads District to experience 'First Fridays', where every first Friday of the month features food trucks, performance art, exhibits and live theater productions on public streets and sidewalks. Additionally, the breathtaking Kauffman Center for Performing Arts is located to the south and the Power & Light District sits just to the east. Streetcar stations along Main Street are available one block to the east. The New Yorker is at the heart of the action in Downtown Kansas City.

1114 Baltimore  
Kansas City,  
Missouri 64105

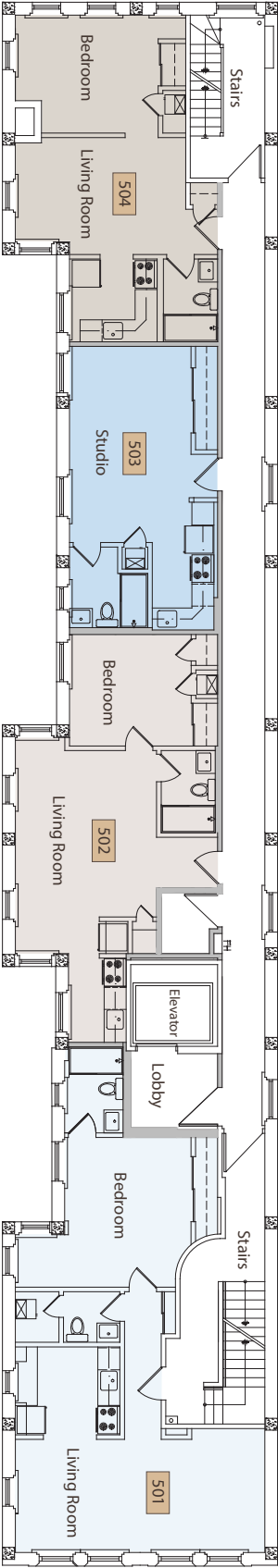


- **Modern Kitchens**
- **Contemporary Bathrooms**
- **Granite Kitchen Countertops**
- **Original Concrete & Terrazzo Flooring**
- **Stainless Steel Appliances**
- **Resident Lounge**
- **Coffee Bar & Tap Room**
- **Fitness center**
- **Private Resident Storage**
- **Nest Thermostats**



# THE NEW YORKER

POWER & LIGHT DISTRICT



816.842.6544  
[www.kcloftcentral.com](http://www.kcloftcentral.com)

