

# THE NEW YORKER

## POWER & LIGHT DISTRICT

The redevelopment of 1112 Baltimore located in Downtown Kansas City Missouri has commenced. This, uniquely lean, nine story building was original constructed in 1915 as the Hotel Bray and is listed on the National Register of Historic Places. Designed in the Jacobethan Architectural Style, the brick east façade is decorated with terra cotta window surrounds, string courses, crenellations and a double roof gable and is reminiscent of something you might see if you were strolling down a street in Derbyshire, England. In 1947 the building was extensively remodeled into a 100 room hotel and rebranded as the New Yorker Inn. This renovation included the addition of a restaurant and cocktail lounge known as the 'Esquire Room'.

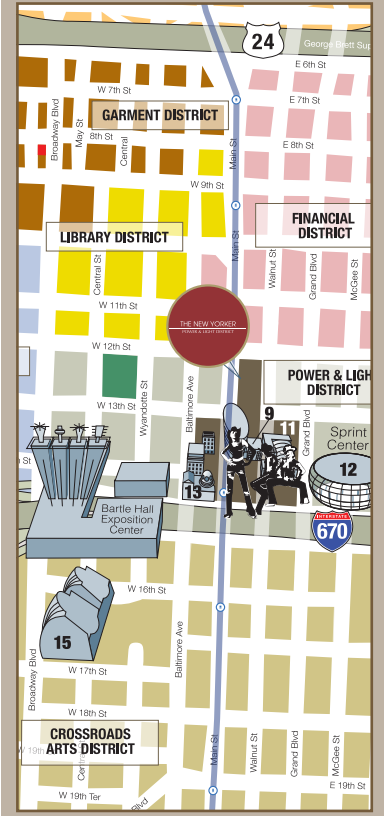
Today within this distinctive structure eight floors will be modernized into 29 studio and one bedroom apartments with open layouts and contemporary finishes ranging in size from 385 to 745 square feet. Apartment features will include polished concrete floors, stone counter tops, modern kitchens, nest thermostats, and sleek bathrooms. The majority of these apartments will be rented for less than \$1,000 per month providing one of the most affordable market rate apartment experiences in Downtown Kansas City.

Resident amenities will include a mid-century inspired lounge, fitness center, laundry center, and resident storage. A coffee bar and tap room will be located on the first floor. Garage parking is also available for rent in the adjacent garage.

The New Yorker will open Spring 2018.

**Contact KCLoфтCentral at 816-842-6544 for leasing details or to reserve your new home today.**

1112 Baltimore  
Kansas City,  
Missouri 64105

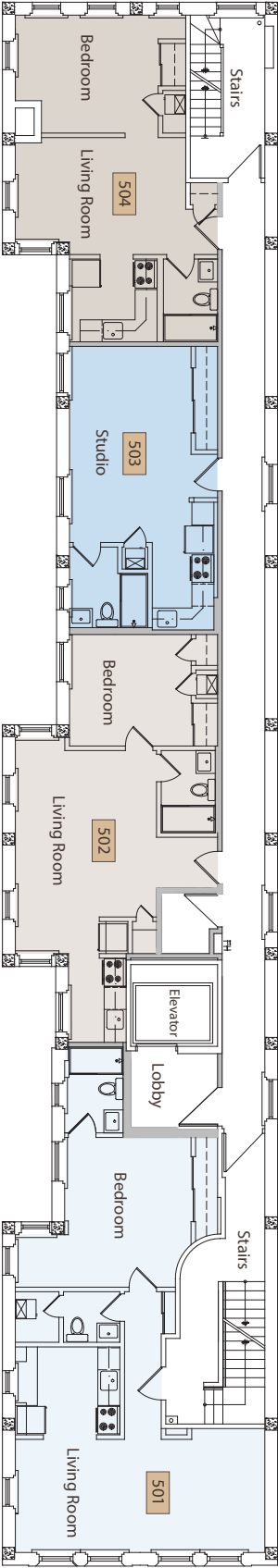


- **Modern Kitchens**
- **Contemporary Bathrooms**
- **Granite Kitchen Countertops**
- **Original Concrete & Terrazzo Flooring**
- **Stainless Steel Appliances**
- **Resident Lounge**
- **Coffee Bar & Tap Room**
- **Fitness center**
- **Private Resident Storage**
- **Nest Thermostats**



# THE NEW YORKER

POWER & LIGHT DISTRICT



816.842.6544  
[www.kcloftcentral.com](http://www.kcloftcentral.com)

