

THE NEW ENGLAND

LIBRARY DISTRICT



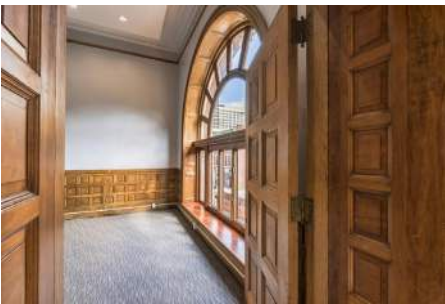
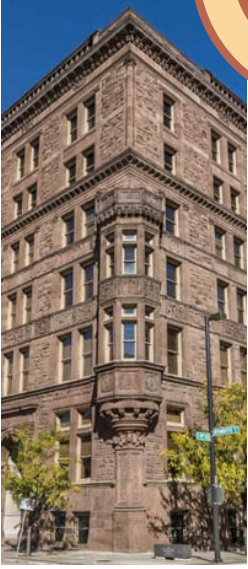
Monthly Rents Starting At
\$1100
Per Month

112 W. 9th, Kansas City, MO 64105

The New England Building, constructed in 1887, is located in the heart of Downtown Kansas City's Library District just a few steps from the Streetcar. Within this gracious structure, seven floors have been renovated into 32 distinctive apartments. Unit features include designer flooring, stone counter tops, slate appliances, tile showers, nest thermostats, walk-in closets and washer/dryers. In addition, several of the apartments are adorned with cast iron fireplace mantels, bankers vaults and an oriel window. The New England's amenities consist of a modern fitness center located within the building's central vault, the Howard Hughes Lounge, the North View Nooks, grand marble hallways, attached garage parking, resident storage and Google Fiber.

Several neighborhood amenities such as restaurants, bars and coffee shops are mere steps away via walking while popular destinations such as the Power & Light District and venues such as the Midland Theater, the T-Mobile Center and the Municipal Auditorium are located a few blocks south of The New England. The River Market district, another immensely popular destination to the north, features both locally-grown fruits and vegetables and more exotic fares such as Ethiopian, Vietnamese and Brazilian cuisines. The north and southbound Streetcar stations connecting you to both of these areas can be found on Main Street, just two blocks east.

This Landmark Property is a tangible reminder of the substantial investments of eastern capital made in Kansas City during the late nineteenth-century building boom. Once home to Trans World Airlines, it is a rare surviving example of commercial architecture adapted from the Renaissance Revival style. The south and west exterior walls of the New England are constructed of rose colored Springfield sandstone shipped from Massachusetts. A two-story oriel window at the southwest corner of the building has carved stone panels at its base that bear the seals of five New England States. Stylistically the New England has no real equivalent in Kansas City. Its architectural design ties it to the roots of tradition and provides possibly the earliest example of fire-proof construction in Kansas City.



KC·LOFT·CENTRAL



Leasing Office 816.842.6544
www.kcloftcentral.com

THE NEW ENGLAND

LIBRARY DISTRICT

Monthly Rents Starting At
\$1,100



Leasing Office 816.842.6544
www.kcloftcentral.com