

# CAMPBELL

---

## CROSSROADS DISTRICT

See the lights, feel the excitement, live at the intersection of Kansas City's new Power and Light District within the Crossroads District.

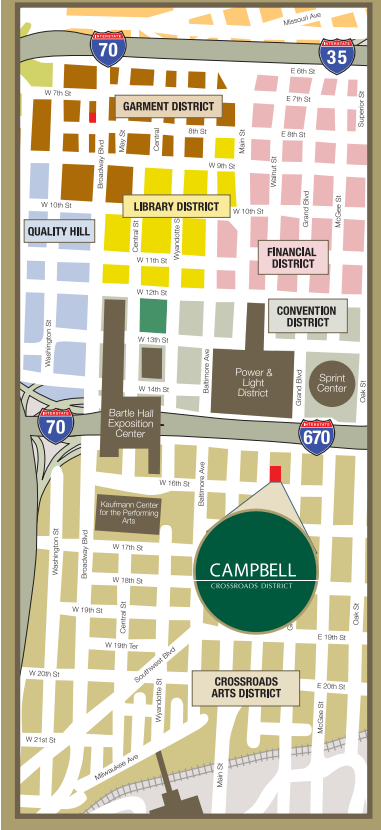
This proximate residential development is Campbell located at 1535 Walnut. A Kansas City landmark, this building was designed and built during World War I by J.C. Sunderland, who also designed Kansas City's Masonic Temple and Coffee Lofts.

These one and two bedroom lofts range in size from 700 to 1,300 square feet. Unit features include: soaring concrete ceilings, private balconies, panoramic views, and washer/dryer hookups.

Building features include a modern fitness center with a full range of equipment, adjacent private parking, tenant storage, video security access, courtesy patrol and on-site maintenance.

It would be difficult to pinpoint a more exciting location in the downtown area for those who want more than just the pulse of the city – Campbell is at the heartbeat of Kansas City's culture of the future.

1535 Walnut  
Kansas City,  
Missouri 64108

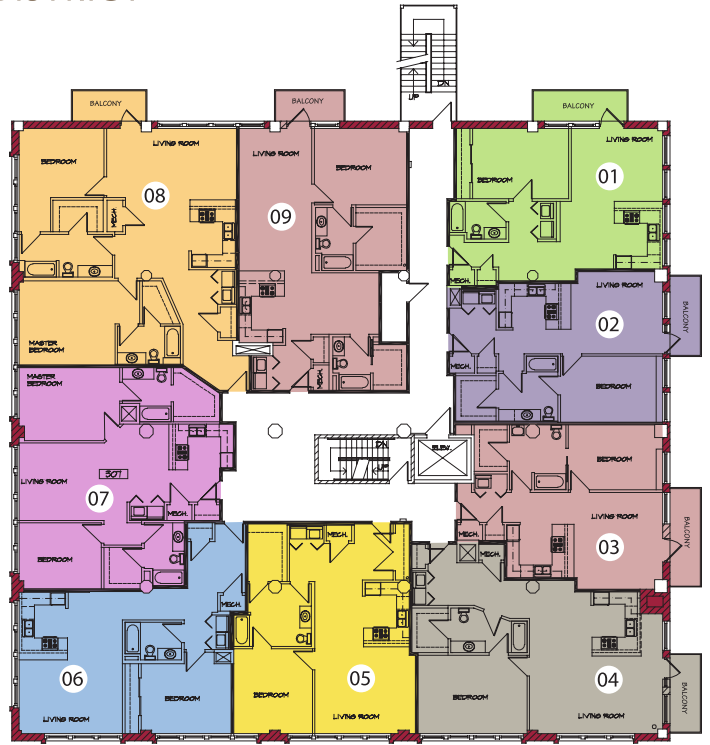


# CAMPBELL

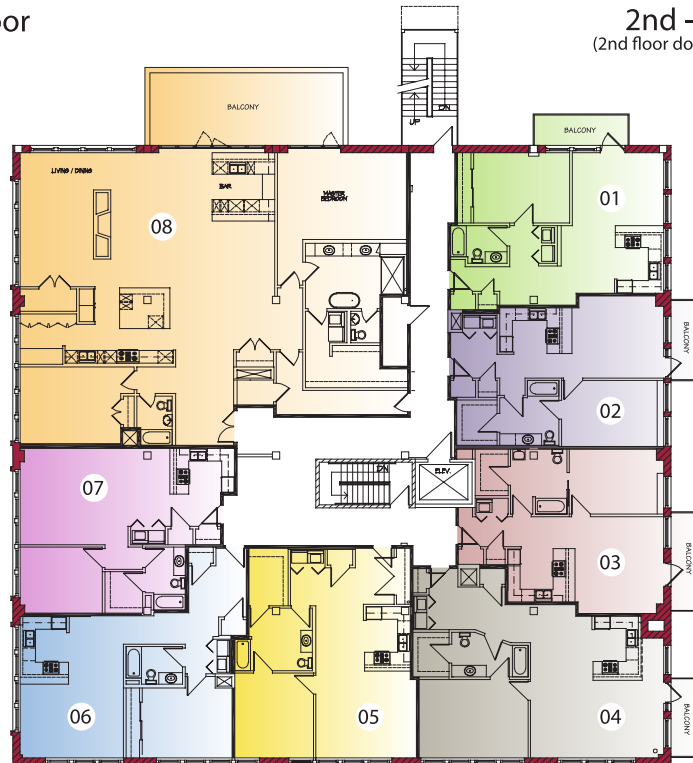
## CROSSROADS DISTRICT



1st Floor



2nd - 6th Floors  
(2nd floor does not have balconies)



7th Floor



816.842.6544  
[www.kcloftcentral.com](http://www.kcloftcentral.com)